

# PROTECTIVE COATING



## SMART PROTECTIVE COATING

SMART PROTECTIVE COATING 是一系列适用于各种恶劣环境所调制的保护漆产品，特别适合海事及工业用途。欲知更详细的使用方法，请参阅SMART Product Technical Data Sheet.

## SMART PROTECTIVE COATING

SMART PROTECTIVE COATING merupakan cat rumusan khas yang pelbagai jenis, dengan perlindungan tidak terlingga untuk melindungi jenis pelbagai permukaan daripada keadaan persekitaran industri yang berat. Untuk maklumat yang lebih lanjut, sila rujuk pada Panduan Teknikal Data Produk SMART (SMART Product Technical Data Sheet).

## SMART PROTECTIVE COATING

SMART PROTECTIVE COATING has a wide range of products specially formulated to provide protection for various harsh industrial environment. For more details of usage, please refer to respective SMART Product Technical Data Sheet.



### 表面处理

确保上漆的表面彻底干却，全无油迹、污垢及其它杂质。未上漆前，先用合适等级的砂纸磨平表面及清理干净。当用于混凝土上，为取得良好效果就必须确保表面不会潮湿。

### Penyediaan Permukaan

Permukaan yang hendak dicat mestilah kering dan bersih daripada minyak, habuk dan lain-lain. Haluskan permukaan dengan menggunakan kertas pasir yang sesuai dan hapuskan habuk sebelum menyapu cat. Untuk permukaan konkrit, pastikan tiada penyelesapan kelembapan bagi mendapatkan hasil yang memuaskan.

### Surface Preparation

Surface to be painted must be dry and free from grease, dirt and other contaminants. Smoothen surfaces with suitable grade sand paper and dust off before application of paints. For concrete, ensure that there is no rising dampness in order to get the best result.

### 施工资料

请参阅 SMART Product Technical Data Sheet.

### Data Penggunaan

Sila rujuk kepada Panduan Teknikal Data Produk SMART (SMART Product Technical Data Sheet).

### Application Data

Please refer to respective SMART Product Technical Data Sheet.

### 用法

髹扫和滚轴涂刷：通常不必调稀。如果需要，用不超过20%的天拿水。

### Cara Penggunaan

Berus & Penggelek : Untuk kegunaan biasa, pencairan tidak diperlukan. Jika perlu, tidak lebih daripada 20% pencairan thinner.

### Direction For Use

Brush & Rollers : For normal use, thinning is not required. If necessary, no more than 20% of thinner can be used to adjust for your requirement.

### 风压喷射

：调入20%天拿水至所需份量。

### Tekanan

：Cairkan 20% pencairan thinner yang disyorkan sehingga menepati keperluan anda.

### Conventional Air Spray

：Thin 20% by volume with SMART recommended thinner and adjust to requirement.

### 气压喷射

：如果需要，用不超过20%的天拿水调至所需。

### Penyembur

：Sedia untuk diguna. Jika perlu tidak lebih daripada 20% pencairan thinner yang disyorkan sehingga menepati keperluan anda.

### Airless Spray

：Ready for use. If necessary, no more than 20% of thinner can be used to adjust for your requirement.

### 危险

确保罐子密封及勿让儿童接触到。

### Awas

Mudah terbakar. Merbahaya jika disedut, bersentuhan dengan kulit ataupun ditelan.

### Warning

Flammable. Harmful by inhalation when in contact with skin or when swallowed.

### 安全

- 避免触及眼睛。
- 不可丢弃于沟渠。
- 避免吸入过多气体。
- 上漆时要保持良好的通风环境。

### Langkah-langkah Keselamatan

- Elak daripada bersentuhan dengan mata.
- Jangan buang kandungan ke dalam longkang.
- Jangan sedut wap cat ini.
- Pengudaraan yang baik penting semasa mengecat.

### Safety Measures

- Avoid contact with eyes.
- Do not empty into drains.
- Do not breathe vapour / spray.
- Proper ventilation is important when painting.



SMART PAINTS (M) SDN BHD (reg. 1030531-M)  
No. 11, Jalan Indah Gemilang 5, Taman Perindustrian Gemilang,  
81800 Ulu Tiram, Johor, Malaysia.  
Tel : 07-289 2855  
Email : info@smart-paints.com Website : www.smart-paints.com



# PROTECTIVE COATING



# PROTECTIVE COATING

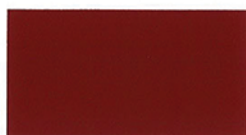
## CONVENTIONAL PROTECTIVE COATING



### SMART ZINC CHROMATE PRIMER

SMART Zinc Chromate Primer is an alkyd based rust inhibitive primer pigmented with zinc chromate.

ZINC CHROMATE PRIMER (GREY GREEN)



### SMART RED OXIDE PRIMER

SMART Red Oxide Primer is an economical anti-corrosive primer.

RED OXIDE PRIMER

### SMART MICACEOUS IRON OXIDE

SMART 1300 Micaceous Iron Oxide is an alkyd based protective coating pigmented with high quality micaceous iron oxide to give a blasted appearance. It may be overcoated with an alkyd based topcoat for decorative purpose or left uncoated.



SILVER



DARK GREY



### SMART ETCHING PRIMER

Unique single pack modified epoxy etching primer that promotes adhesion onto galvanized iron, stainless steel, aluminium, light alloys surface. Subsequently, it can be over-coated with any finishing paint as alkyd, acrylic, epoxy or polyurethane.



ETCHING PRIMER



## ALUMINIUM HEAT RESISTANCE PAINT

### SMART ALUMINIUM HEAT RESISTANCE PAINT 200°C

SMART Aluminium Heat Resistance Paint 200°C is a high quality aluminium paint specially formulated to withstand heat up to 200°C.

### SMART ALUMINIUM HEAT RESISTANCE PAINT 600°C

SMART Aluminium Heat Resistance Paint is a superior quality silicone based aluminium paint. It is formulated to withstand heat up to 600°C. Suitable for steel surfaces where high heat resistant is required. As this product cured by a minimum temperature of 300°C, it is essential that this temperature be reached at least for 30 minutes to ensure good performance.



ALUMINIUM (200°C)



ALUMINIUM (600°C)



## ROAD LINE PAINT

### SMART ROAD LINE PAINT

SMART 6200 Road Line Paint is a one-pack high performance road marking paint with excellent durability and obliterating power. It is very fast drying paint and available in both reflective and non-reflective type.

### SMART WATER BASED ROAD LINE PAINT

SMART Water Based Road Line Paint is an acrylic water based paint specially formulated for road marking of bituminous and cements based road surfaces. It provides excellent adhesion and weather durability.



WHITE



BLACK



YELLOW



RED\*

\* Premium Colours

## HEAVY DUTY COATINGS - FINISHES

### SMART EPOXY ENAMEL



ASH GREY



IVORY



EXECUTIVE GREY SP 0104



MISTY GREY SP 1457



FERN GREEN



DARK GREEN



EVERGREEN



LIME GREEN SP 1459



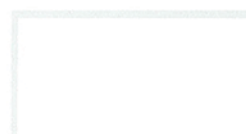
YELLOW



BRIGHT BLUE



SIGNAL RED \* SP 0437



WHITE SP 9102

\* Premium Colours