

EPOXY COLORED SAND
EPOXY GRANITE
2 PACK SYSTEM EPOXY FLOOR



* Available in 1.5kg set, 6.5kg set & 25kg set

Tested by :




Testing Method: ASTM E303 - 22 Standard Test Method For Measuring Surface Frictional Properties Using the British Pendulum Tester

Pendulum Test (Anti-Slip)
Testing Method: ASTM E303 - 22 Standard Test Method For Measuring Surface Frictional Properties Using the British Pendulum Tester

Report No.: 2022CE2975-A1
(Full System + Anti-Slip Polymer)

Report No.: 2022CE2976-A1
(Clear + Anti-Slip Polymer)

WET or DRY *****
WET or DRY *****

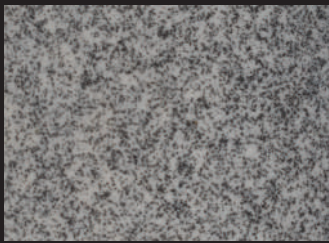



ISO 9001:2015
CERTIFIED

Scan Here



How to apply



EG801 Light Grey



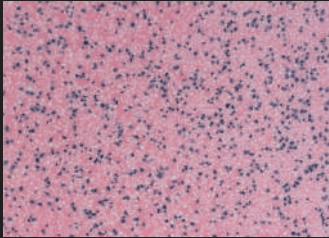
EG802 Medium Grey



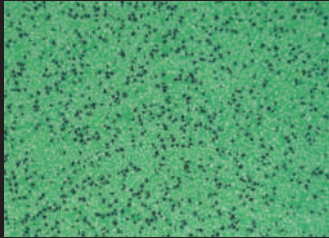
EG803 Purple Grey



EG804 Tiny Grey



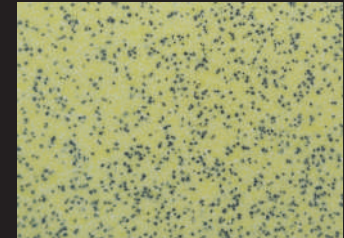
EG805 Pink



EG806 Green



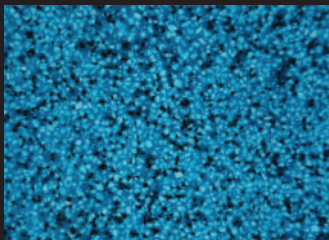
EG807 Brown



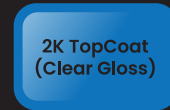
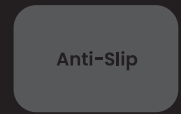
EG808 Yellow



EG821 Big Grey



EG822 Big Blue



APPLICATION METHOD

STEP 1

Preparing



CLEANING, PATCHING & TAPE

Make sure the floor is clean & dry before Painting Job

STEP 2

Mix Part A & Part B



2 PACK SYSTEM

Mix Part A & Part B, Stir well for 2-3 minutes until well-blend

STEP 3

DONE Apply & Finishing



APPLY TO THE FLOOR

Pot life is 20-30 minutes. Thickness 2 mm.

Pot life : 20-30 minutes at 30°C after mixing with hardener.
Drying Time : Dependent on temperature and humidity.
Theoretical Coverage : 0.5 m²/ Kg (actual coverage dependent on thickness)

Touch Dry : 3-5 hours
Hard Dry : 24 hours

Clean all paint equipment with thinner immediately after use.

FAQ:

Issue / Question	Solution
Moisture or damp floor (edges & corners)	Epoxy coatings are sensitive to moisture during application. We propose applying Smart Epoxy Primer as a waterproofing step.
Uneven floor causing patchy colour	After the first layer has dried, apply an additional thin layer (approximately 1 mm) to even out the surface and correct any patchiness.
Need extra surface protection?	For light-use areas, Epoxy Granite is enough. For heavy traffic or chemical exposure, apply Smart 2K PU Finish 22 as a clear topcoat for added durability.
Curing time and conditions	24-48 hours at room temperature. Avoid water or heavy traffic until fully cured.